



The Butterfly System™

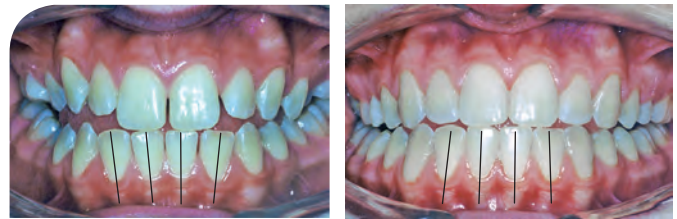
LOW PROFILE VERTICAL SLOT BRACKETS



The Butterfly System was developed by Dr. Jay Bowman to address the most common orthodontic mistakes reported by the ABO. The bracket's low profile and smooth, rounded tie wings provide exceptional comfort. The incorporation of a vertical slot offers added convenience and versatility. The use of auxiliaries in the vertical slot gives control in all three planes and allows convenient tying-in of severely rotated or misaligned teeth.

Anterior Root Angulation

Most popular preadjusted prescriptions have no angulation in mandibular anterior brackets. This may result in distal tipping of incisor crowns or root convergence. Progressive mesial crown tip is incorporated into the Butterfly System at the lower anteriors. This reduces the typical distal crown tipping and root convergence of the lower incisors, improving the stability of finished cases by "tent-posting" the incisors.



These photos show a 14 year old female patient treated without extractions. After 21 months, note the improved root angulation of the mandibular anterior teeth, shown in the photo on the right. Progressive anterior angulation of 2° on the centrals and 5° on the laterals produced "tent-posting" of incisors.

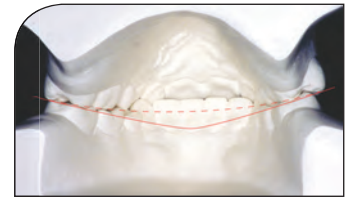
Preventive Lower Anterior Torque

Lingual crown torque of -5° is designed into the mandibular anterior brackets of the Butterfly System to resist incisor tipping during leveling. As an option, -10° of preventive torque is offered to counteract the additional labial tipping from Class II elastics or fixed functional appliances.



Progressive Posterior Torque

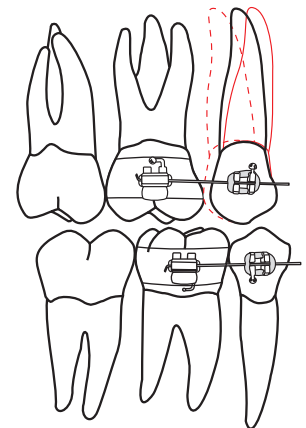
The Butterfly System features increased maxillary posterior torque (-14°) and reduced mandibular posterior torque (-10°) to improve intercuspation and posterior overjet, flatten Curve of Wilson, and reduce interferences.



*Dotted line = ideal Curve of Wilson
Solid line = NOT ideal Curve of Wilson*

Reversible Second Premolar Brackets

The Butterfly System accommodates both extraction and non-extraction cases. With non-extraction mechanics, +3° mesial crown tip reduces marginal ridge discrepancies between 1st and 2nd premolars. In extraction cases, the 2nd bicuspid brackets may be reversed to the contralateral 1st or 2nd bicuspid, providing -3° distal crown tip, which improves root paralleling during space closure.



*Solid line = extraction
Dotted line = nonextraction*



Look no further

Versatile Vertical Slot

An aesthetic and practical option that eliminates the need for ball hooks on brackets



May be used to sling-tie stainless steel ligatures around the arch wire for severely displaced teeth

Acts as an anchor point for a variety of time saving auxiliaries

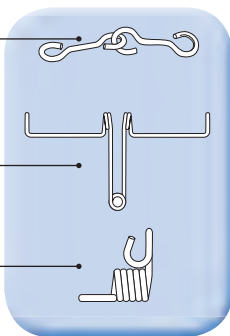


Auxiliaries give control in all three planes:

Monkey Hooks — direct eruption of impacted teeth

Kilroy Springs — direct eruption of impacted canines

Compliance Springs — reinforce Class II elastic wear



Optional offset premolar brackets



Reinforces the bonding strength of bicuspid brackets by increasing the bonding surface area by 40%



BRACKET ID

Color coded by quadrant



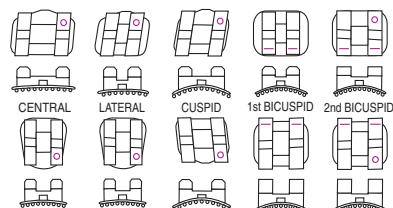
HGW: high gingival wing
D-G: distal/gingival
M-G: mesial/gingival
VS: vertical slot

OFFSET BICUSPID OPTIONS: Gingivally OFFSET bicuspid brackets offer a larger bonding base covering more area on the occlusal one third of the buccal surface and increasing bond strength.

RAISED PAD OPTIONS: Blue dot on gingival of pad.

PERMANENT MARKS

- Maxillary Central, lateral, cuspid - dimple D-G
1st bicuspid - ID line occlusal
2nd bicuspid - ID line occlusal and dimple D-G
- Mandibular Anteriors, cuspid - dimple D-G
1st bicuspid - ID line occlusal
2nd bicuspid - ID line occlusal and dimple D-G





Maxillary	Torq	Ang	Rot	M-D	R/L	.018		.022	
						No hook	With hook	No hook	With hook
Central	+18	+5	0	.140	R L	393-6021 393-6022		393-6031 393-6032	
	+14	+5	0	.140	R L	393-6001 393-6002		393-6041 393-6042	
Lateral	+12	+9	0	.100	R L	393-6023 393-6024		393-6033 393-6034	
	+8	+9	0	Hook D-G	R L	393-6003 393-6004	393-6003B 393-6004B	393-6043 393-6044	393-6043B 393-6044B
Cuspid	0	+9	0	Hook D-G	R L	393-6005 393-6006	393-6005B 393-6006B	393-6045 393-6046	393-6045B 393-6046B
1st Bicuspid	-7	0	0	OFFSET No HGW, hook M-G	R L	393-8607 393-8607	393-8608B 393-8609B	393-8647 393-8647	393-8648B 393-8649B
	-7	0	0	No HGW, hook M-G	R L	393-6067 393-6067	393-6068B 393-6069B	393-6087 393-6087	393-6088B 393-6089B
2nd Bicuspid	-8	+3	0	OFFSET No HGW, hook M-G	R L	393-8617 393-8618	393-8617B 393-8618B	393-8657 393-8658	393-8657B 393-8658B
	-8	+3	0	No HGW, hook M-G On raised pad	R L	393-7617 393-7618	393-7617B 393-7618B	393-7657 393-7658	393-7657B 393-7658B
	-8	0	0	+3 opt on band Weldable diagonal twin with VS	R/L	002-0607		002-0647	
1st Molar	-14	-6 opt. on band	8	Weldable triple convertible with hook, .045 headgear occlusal	R L		004-682C 004-683C		004-684C 004-685C
2nd Molar	-14	-6 opt. on band	7	Weldable single diagonal torque with hook and distal extension	R L		004-552C 004-553C		004-554C 004-555C

Mandibular	Torq	Ang	Rot	M-D	R/L	.018		.022	
						No hook	With hook	No hook	With hook
Central	-5	+2	0	.100	R L	393-6010 393-6011		393-6050 393-6051	
	-10	+2	0	.100	R L	393-6012 393-6013		393-6052 393-6053	
Lateral	-5	+5	0	Bevel occlusal	R L	393-6014 393-6015		393-6054 393-6055	
	-10	+5	0	Bevel occlusal	R L	393-6016 393-6017		393-6056 393-6057	
Cuspid	-3	+6	3	Hook D-G	R L	393-6018 393-6019	393-6018B 393-6019B	393-6058 393-6059	393-6058B 393-6059B
1st Bicuspid	-7	0	0	OFFSET No HGW, hook D-G	R L	393-8620 393-8621	393-8620B 393-8621B	393-8660 393-8661	393-8660B 393-8661B
	-7	0	0	No HGW, hook D-G	R L	393-6620 393-6621	393-6620B 393-6621B	393-6660 393-6661	393-6660B 393-6661B
2nd Bicuspid	-9	+3	0	OFFSET No HGW, hook D-G	R L	393-8622 393-8623	393-8622B 393-8623B	393-8662 393-8663	393-8662B 393-8663B
	-9	+3	0	No HGW, hook D-G On raised pad	R L	393-7622 393-7623	393-7622B 393-7623B	393-7662 393-7663	393-7662B 393-7663B
	-9	+3 opt. on band	0	Weldable diagonal twin with VS	R/L	002-0622		002-0662	
1st Molar	-10	-6 opt. on band	6*	Weldable double convertible with hook	R L		004-634CM 004-635CM		004-636CM 004-637CM
	0	-6 opt. on band	6*	Weldable double convertible with hook	R L		004-630CM 004-631CM		004-632CM 004-633CM
2nd Molar	-10	-6 opt. on band	7*	Weldable single diagonal torque with hook and distal extension	R L		004-541C 004-540C		004-543C 004-542C
	0	-6 opt. on band	7*	Weldable single diagonal torque with hook and distal extension	R L		004-536C 004-537C		004-538C 004-539C

*Optional 0° rotation on lower bands available